

PRO-2600



PRO steel 230-400mm
POWER SAVING 50% @ 3500A

SYNERGIC CONTROL
NEW 2019

I max=3500A

0 自动/Automatic
I 手动/Manual

1.2m x 320mm

The pro has a powerful current of 3500A, which is an ideal product for traction and correction of low-thickness body components (engine hood, door, water plate). The product is multifunctional, which makes it a complete solution. Due to its low power consumption, it can work on a simple 230V power supply.

tools select

分体结构, 移动灵活
SPLIT STRUCTURE
MOBILE AND FLEXIBLE

DENT BOX BAR PRO

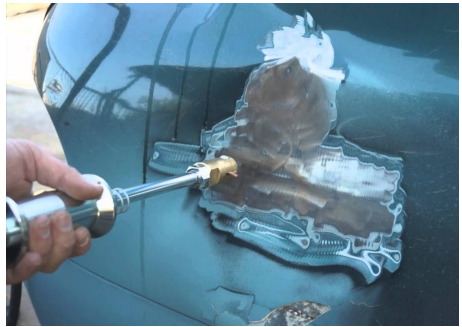
SCAN WITH COPPER COATING
CENTERING BRIDGE
STRAIGHT PULLING BRIDGE
FLAT KEY
ELECTRODE FOR WAVY WIRES
CROW

WAVY WIRES
CARBON HEATING ELECTRODE
CENTER LINE BRIDGE ELECTRODE
CARBON HEATING
Dent pulling spot hammer
Pulling hammer with back

1.6m x 320mm

Flip-flops

Model	5000Hz	I ₂ max A	AUTOMATIC WIRE/UL	AMP	mm	mm	mm	mm
PRO230	230V	3500	✓	16	✓	✓	450X28X30	25
PRO400	400V	3800	✓	16	✓	✓	450X28X30	25



Specifications

Model	PRO-2600
Input Voltage (V)	AC230 ±15%
Input Power (KVA)	2.2
Frequency (Hz)	50/60
Output Current (A)	2600
Input Current (A)	-
Duty Cycle (%)	60
Weight (Kg)	18
Dimensions (mm)	200 x 320 x 180

Description

PRO has an output current of 3500A and is an ideal product for traction and correction of low-thickness original body parts (engine hood, door, roof panel). The product is multifunctional, which makes it a complete solution. Due to its low power consumption, it can work on a simple 230V power supply.

3 modes available for the multi-function repair machine:

- Weld the triangle piece and gasket pull of the body components
- Wave wire welding, free bending

Singapore HQ
Blk 6 Marsiling Industrial Estate Road 1
#01-14 Singapore 739275

Myanmar
No. 760A, Pyi Htaung Su, Main Road
65 Quarters, Industrial Zone (2) South Dagon
Yangon, Myanmar

Indonesia- Pt. Inti Bangunan Perkasa
No. 15-17 Jalan Pelita 1, Batam, Kepulauan Riau
29453

Showroom
No. 3 Soon Lee Street, Pioneer
Junction #01-37 Singapore 627606

www.danoxwelding.com
sales@danoxwelding.com

Retail
Blok D, No. 5 Jalan Pembangunan 2, Komplek
Batama, Batam, Kepulauan Riau- 29432