



Specifications		
MODEL	HK-8SS	
Size (mm)	215x275x215	
Weight (Kg)	8.5	
Power	AC220V / DC24V	
Power (W)	22	
Adsorbability (Kg)	10~25	
Walking speed (mm/min)	50~900	
Range of adjusting welding torch	Up & down (mm)	50
	Left-right (mm)	50
	Range of working angle (°)	±45
	Range of adjusting angle (°)	10
	Range of working angle (°)	360

Welding wire diameter		Φ1.2mm	Φ1.4mm	Φ1.6mm
Welding parameter	Down hand welding	120-300	150-380	180-430
	flush fillet welding	120-280	150-320	180-380
	horizontal welding	120-280	150-300	180-330
Voltage (U)	U = 14+0.05I 300A under U=0.041+16±1.50 above 300A U=0.041+20±2.0			
Distance between nozzle and workpiece (H)	Below 200A: H=10~15mm 200~350A H = 15 ~ 20mm 350~500A H = 20 ~ 25mm			
Welding extension Length (L)	The length is about 10 times welding wire diameter. It is L=10d			

Singapore HQ
Blk 6 Marsiling Industrial Estate Road 1
#01-14 Singapore 739275

Myanmar
No. 760A, Pyi Htaung Su, Main Road
65 Quarters, Industrial Zone (2) South Dagon
Yangon, Myanmar

Malaysia- Weldmart
No. 3 Persiaran Batu Gajah Perdana 7
Pusat Komersial Batu Gajah Perdana 31000
Batu Gajah

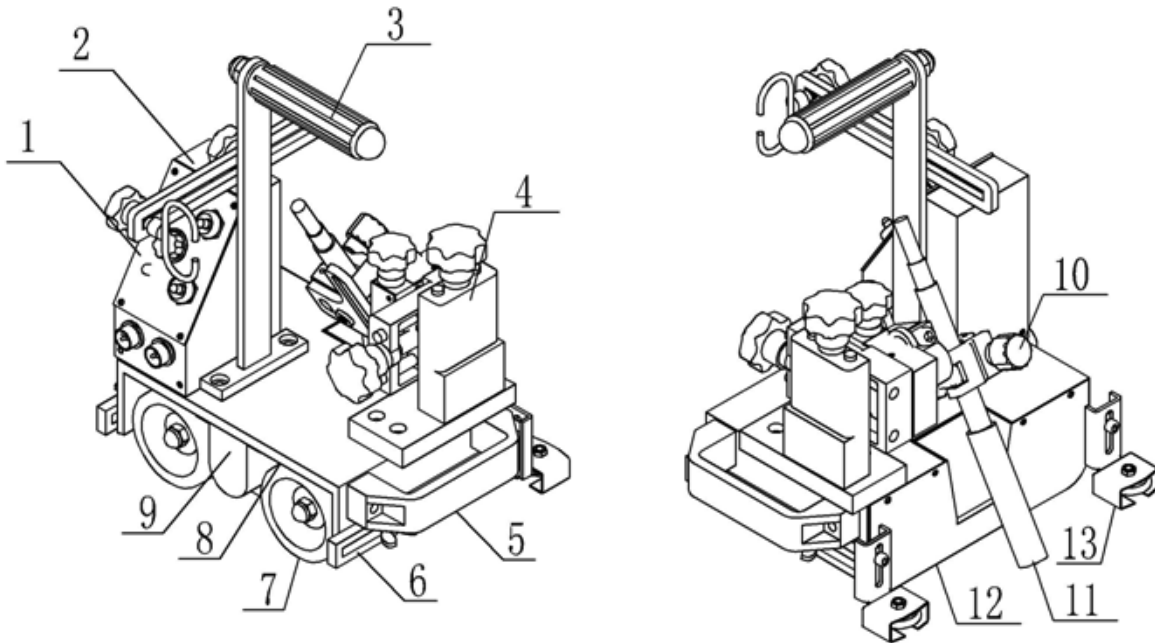
Indonesia- Pt. Inti Bangunan Perkasa
No. 15-17 Jalan Pelita 1, Batam, Kepulauan Riau
29453

Showroom
No. 3 Soon Lee Street, Pioneer
Junction #01-37 Singapore 627606

www.danoxwelding.com
sales@danoxwelding.com

www.weldmart.com.my
Tel: +6012-505-2639

Retail
Blok D, No. 5 Jalan Pembangunan 2, Komplek
Batama, Batam, Kepulauan Riau- 29432



HK-8SS is made up of carriage body, guide wheel, torch handle, X-Y slide, torch wiggler and control box. Carriage body : It is the frame of machine and carrier of others.

1. Control panel
2. Control box : It can adjust all actions of carriage. Please refer to "explanation of control panel"
3. Hand grips : Please hold this hand grip when you carry the machine.
4. X-Y moving slide : Use it to adjust the position of torch. In the process of welding, you can tune the torch up and down.
5. Plastic handle
6. Guide pulley bar
7. Walking wheel
8. Base
9. Motor casing
10. Welding torch gripper: It is used to fix the torch. You can take down torch by it, when you want to repair or adjust the torch.
11. Torch
12. Insulation baffle board
13. Guide wheel assembly: It rolls along the base metal surface and align the torch to the welding part.